



Project \_\_\_\_\_  
Item No. \_\_\_\_\_  
Model No. \_\_\_\_\_  
Quantity \_\_\_\_\_

CSI No. 114000

## COUNTER HEIGHT HOT FOOD CABINET - THREE SECTION



CHHC-90-3S-D  
102" Wide, S/S Exterior and Interior

### MODEL GUIDE

Model Number	Description
<input type="checkbox"/> CHHC-75-3S-D	87" Wide, S/S Exterior and Interior
<input type="checkbox"/> CHHC-90-3S-D	102" Wide, S/S Exterior and Interior
Options	Model Number Modification
<input type="checkbox"/> Pass-Thru	Add prefix "PT" to model number
<input type="checkbox"/> Narrow Depth	Change suffix "D" to "N"
<input type="checkbox"/> Glass Door	Change "3S" to "3G"

### STANDARD FEATURES:

#### Construction/Cabinet

- Cabinet specially designed for holding hot food (not a modified refrigerator)
- 100% hi-temp fiberglass insulation for safety, durability and longevity
- Heat resistant, non-conductive phenolic thermal breaker
- Exterior front and sides – heavy gauge stainless steel
- Exterior back and bottom – heavy gauge galvanized
- Stainless steel front, door, and control housing
- Heavy-duty 6" adjustable stainless steel legs
- Fully coved interior with welded radius corners for easy cleaning
- Stainless steel shelf clips and shelf standards
- One adjustable chrome plated wire shelf per section

#### Doors

- Self-closing door hinges with stay-open feature at 120°
- Standard left door hinged left, center and right door hinged right (other configurations available)
- Welded stainless steel door handle

#### Heating System

- Easy to set, front-mounted digital control
- Temperature setpoint memory (keeps setting when power is off)
- Main power switch
- Side mounted humidity controlling vent

#### Control Systems & Warranty Coverage

- Digital temperature control – easily adjust setpoint between 165-175°F
- Master power switch
- One 9ft electrical cord (115V models only)
- Warranty: 5 year parts, 1 year labor

### OPTIONS & ACCESSORIES:

- ☐ Stainless steel top (specify flat or marine edge type)
- ☐ Stainless steel back \_\_\_\_ bottom \_\_\_\_ (specify either or both)
- ☐ Additional chrome wire shelves (specify quantity) \_\_\_\_
- ☐ Stainless steel wire shelf in lieu of chrome shelf
- ☐ Tray slides (specify quantity)  
"L" Type \_\_\_\_ Universal slides \_\_\_\_ "R" Type \_\_\_\_
- ☐ Stainless steel curb base (specify 4" or 6" high)
- ☐ 6" front locking casters in lieu of legs (no charge)
- ☐ 6" seismic legs
- ☐ 5" front locking casters
- ☐ 4" front locking casters
- ☐ ADA Height – stainless steel sub top changes overall height to 31.5" (requires 4" high casters)
- ☐ 2 drawers in lieu of door (CHHC-90 standard depth model only)
- ☐ Correctional facilities package
- ☐ One 9ft electrical cord & plug (NEMA L14-20P; 208/230V models)

### AGENCY APPROVALS:



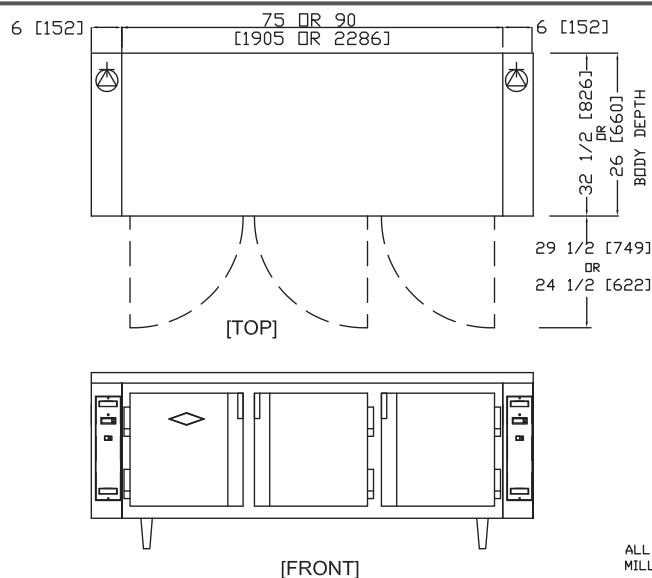
Intertek



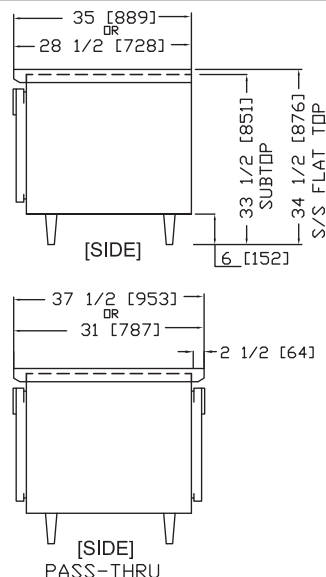
Intertek



# COUNTER HEIGHT HOT FOOD CABINET - THREE SECTION



ALL DIMENSIONS IN INCHES EXCEPT [ ] IN MILLIMETERS



PRODUCT DATA	CHHC-75 Standard Depth	CHHC-75 Narrow Depth	CHHC-90 Standard Depth	CHHC-90 Narrow Depth
KEY DIMENSIONS				
Width (overall)	87.0"	87.0"	102.0"	102.0"
Depth (overall)	34.5"	28.0"	34.5"	28.0"
Depth Pass-Thru Models (overall)	36.5"	30.0"	36.5"	30.0"
Height (overall inc. legs; with subtop)	33.5"	33.5"	33.5"	33.5"
Height (overall inc. legs; w/ optional s/s finished top)	34.5"	34.5"	34.5"	34.5"
CAPACITY				
Capacity (cu.ft.)	21	16	26	20
ELECTRICAL				
Voltage (dedicated circuit required)	115 or 208/230	115 or 208/230	115 or 208/230	115 or 208/230
Amperage (115V)	9.1	9.1	9.1	9.1
Amperage (208/230V)	5.0	5.0	5.0	5.0
NEMA Plug Configuration*	5-15P	5-15P	5-15P	5-15P
Wattage	1050	1050	1050	1050
SHIPPING				
Ship Weight (lbs.)	620	570	745	695
Ship Volume (cu.ft.)	101	88	117	102
Crated Dimensions (39" H)	93"W x 48"D	93"W x 42"D	108"W x 48"D	108"W x 42"D

\*115V models only; 208/230V models hardwired

Data is for standard models; options may change specifications.

## UTILITY REFRIGERATOR

12160 Sherman Way • North Hollywood, CA 91605

Telephone: (818) 764-6200 • Fax: (818) 764-6211

[www.utilityrefrigerator.com](http://www.utilityrefrigerator.com)

DUE TO CONTINUOUS PRODUCT IMPROVEMENTS, SPECIFICATIONS ARE SUBJECT TO CHANGE WITHOUT NOTICE.

©/™/® Utility Refrigerator



WARNING - This product can expose you to chemicals including Di(2-ethylhexyl)phthalate (DEHP), which is [are] known to the State of California to cause cancer and birth defects or other reproductive harm. For more information go to [www.P65Warnings.ca.gov](http://www.P65Warnings.ca.gov)

UR-CHHC3 | MU